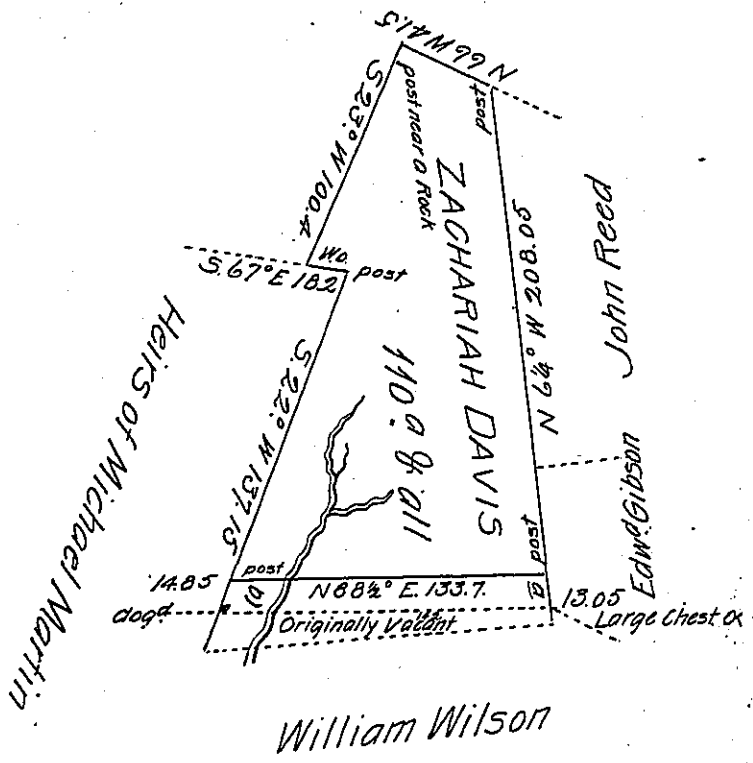


George Washington



Note, the Space between the dotted lines was left vacant at the time of making the Survey, but upon examination a surplus of 11 1/2 Acres was found to be contained in the Survey, which is represented between the inmost dotted & the parallel black lines. to conform with the Law I have Struck it off. I have just returned from so doing, and have observed a Settlement made already within the part Struck off at "a" or "b" there had been a Cabin and it is said inhabited some time, under Zachariah Davis. part of a field is now left out which had been occupied many years ago from its present appearance. It was doubtless the intention of Zachariah Davis "who was an early Settler to have held to the innermost dotted line, but having been remiss in taking a Warrant large enough to embrace it, I have "reluctantly" reduced it to the Stated quantity.

A. McGlean.

S. C. E. 56.

Situate on the Waters of Washington's Mill Run in Franklin Township Fayette County and Surveyed the 24th day of May 1792. In pursuance of a Warrant dated the 5th day of November 1791.

Pr. Alexander McGlean Deputy

To Samuel Cochran Esquire

Surveyor General

IN TESTIMONY that the above is a copy of the original remaining on file in the Department of Internal Affairs of Pennsylvania, made conformably to an Act of Assembly approved the 16th day of February, 1833, I have hereunto set my Hand and caused the Seal of said Department to be affixed at Harrisburg, this fifteenth day of August 1904.

Isaac P. Brown
Secretary of Internal Affairs